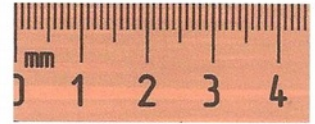


DUNG BEETLE IDENTIFICATION CHART

(Adapted from a publication of Kiewa Valley Landcare, NE Victoria)



WHAT IS THE LENGTH OF YOUR BEETLE?

Measure from tip of the head to the end of abdomen (in mm)

SECTION A. BLACK BEETLES

LENGTH: 20 – 25mm

FEATURE: Blue/purple sheen on the underside

= *Geotrupes spiniger* (Blue dung beetle)



Bluish sheen on the underside

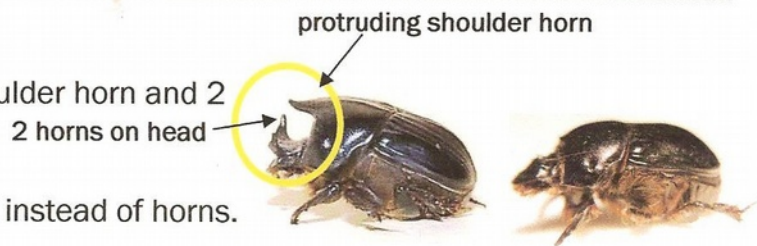
LENGTH: 13 - 20mm

FEATURE: Shiny black. Protruding shoulder horn and 2 horns on head

= *Bubas bison* (male)

FEATURE: Two parallel ridges on head instead of horns. Protruding shoulder horn not present

= *Bubas bison* (female)



Male
Side view

Female
2 ridges on head

LENGTH: 10 – 13mm

FEATURE: Matt black, when viewed from the side there is a distinct shoulder ridge – horns are not present

= *Onthophagus binodis* (Humpbacked dung beetle)



Male

Female

LENGTH: 7 - 12mm

FEATURE: Shiny black with coppery green sheen. A slight groove runs down the middle of the midsection. Males have upright horns

= *Onthophagus australis* (native species)



Groove on midsection

Male has upright horns
(green sheen)

LENGTH: 8 – 10mm

FEATURE: Shiny black. Major males have long curved horns that sweep back over the thorax. Minor males have shorter horns and females have no horns but have a similar body shape

= *Onthophagus taurus* (Bullhorned dung beetle)

long curved horns



Major male

Female